

# Santerno Reference List Applications in Industrial Automation

## Ukraine

June 2016



# Products

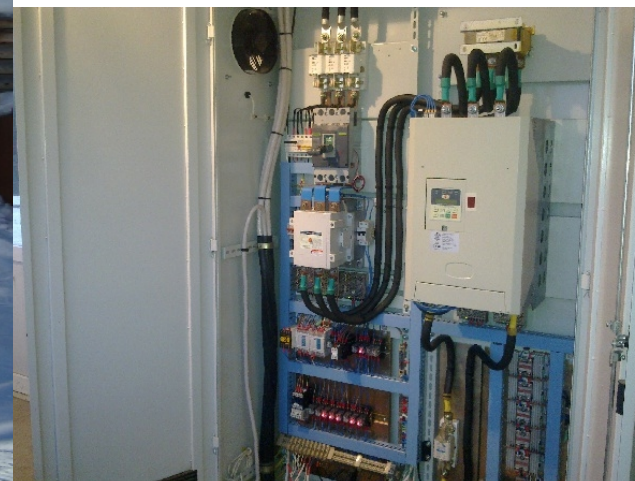


# Reference List-Ukraine



# Chair Lift : Chernovtsy reg. (West)

**Location:** Beylikduzu –Year 2012-2015  
**Application:** Chair List  
**Products:** DCREG4.350 – 2 pcs.  
DCREG 4.150 – 1 pcs.





## Multipurpose Application : Zaporozhya -East-South

### Products :

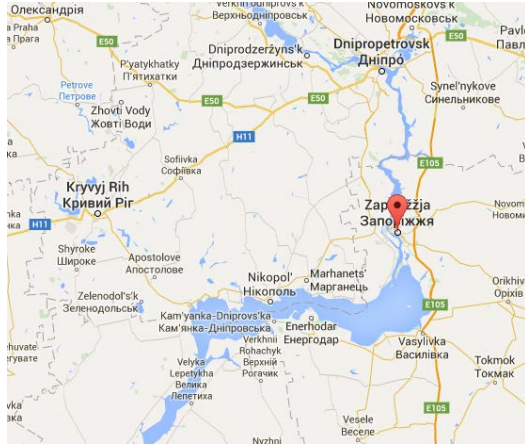
- Sinus K 0129 4T BA2 K2 – n. 2,
- Sinus K 0162 4T BA2 K2 – n.2 – Water cooling tower
- Sinus Penta 0313 4T XA2 K0 – n. 6 Water pumps.
- Sinus Penta 0060 4T BA2 K2 – n.2
- Sinus Penta 0060 4T BA2 K5 – n.1 – Exhausters
- Sinus Penta 0034 4T BA2 K5 – Fan,
- Sinus Penta 0086 4T BA2 K2 – n.2 – Fans
- Sinus Penta 0260 4T XA2 K0 – n.2. Water pumps

1/3



## Multipurpose Application : Zaporozhya -East-South

2/3





## Multipurpose Application : Zaporozhyya -East-South

3/3





# Acqua Park-Ukraine

**Location:** Ukraine

**Products:** Sinus M 0007 4T BA2 K2 – n.1





# Centrifuge for flush water (drill fluid)- Region :Sumy (East-North), 2006-2008



1/2

## Products :

Sinus Penta 0060 4T BA2 K2 – n. 10

Sinus K 0067 4T BA2 K2 – n.10

Sinus M 0017 4T BA2 L2 – n.10

Sinus Penta 0017 4T BA2 K2 – n.5



# Centrifuge for flush water (drill fluid)-

Region :Sumy (East-North), 2006-2008



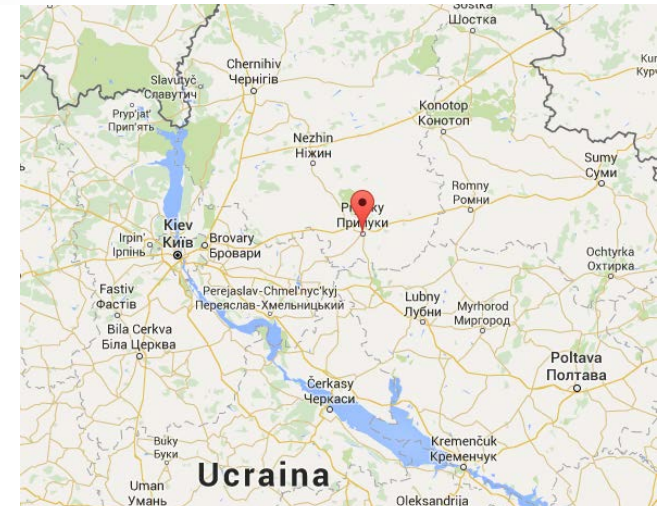


# Deep Well Pumps 45kW– Priluki (North)



**Application:** Deep Well Pumps –City Line

**Products:** *Sinus Penta 0049 4T 3A2 K2 – n.2 pcs.*



# Electromagnets: Dnepropetrovsk- 2012

**Application:** Electromagnets

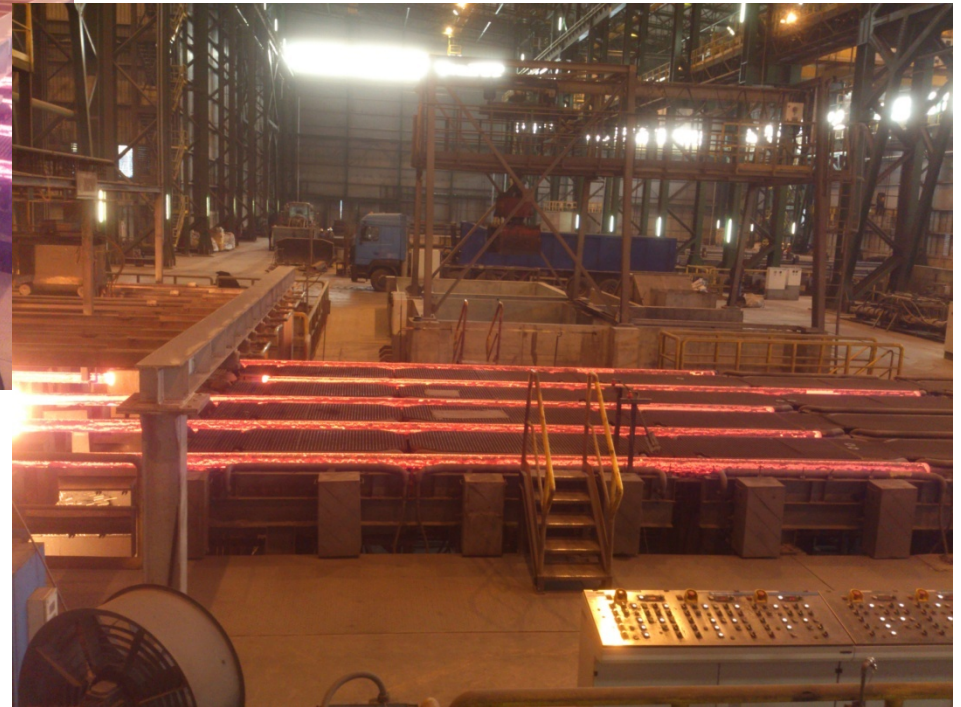
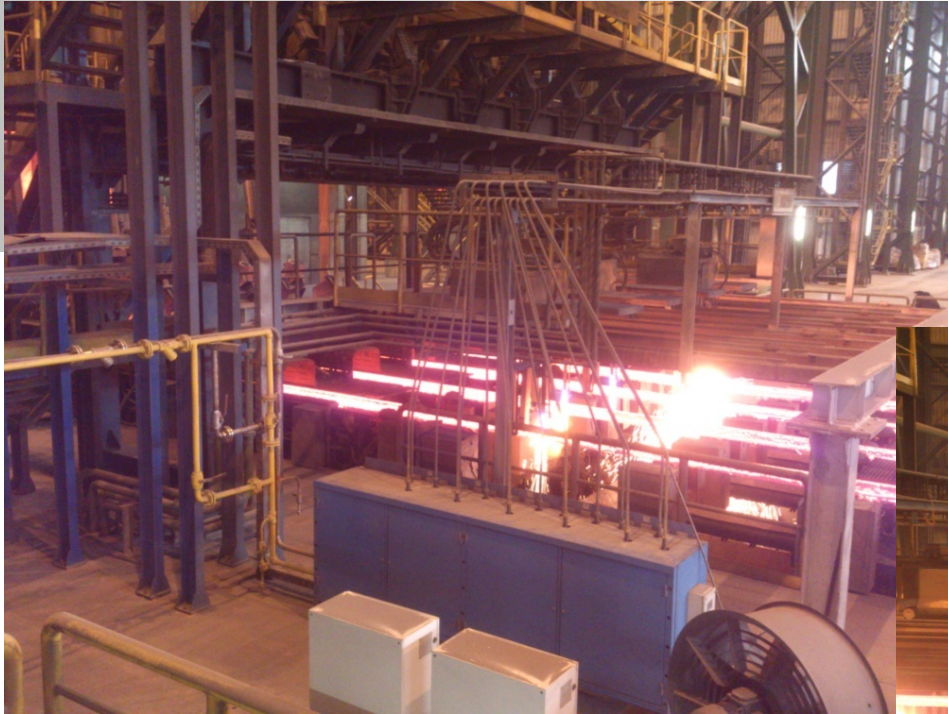
**Products :** Nr. 10 DCREG 4.150

1/2





# Electromagnets: Dnepropetrovsk

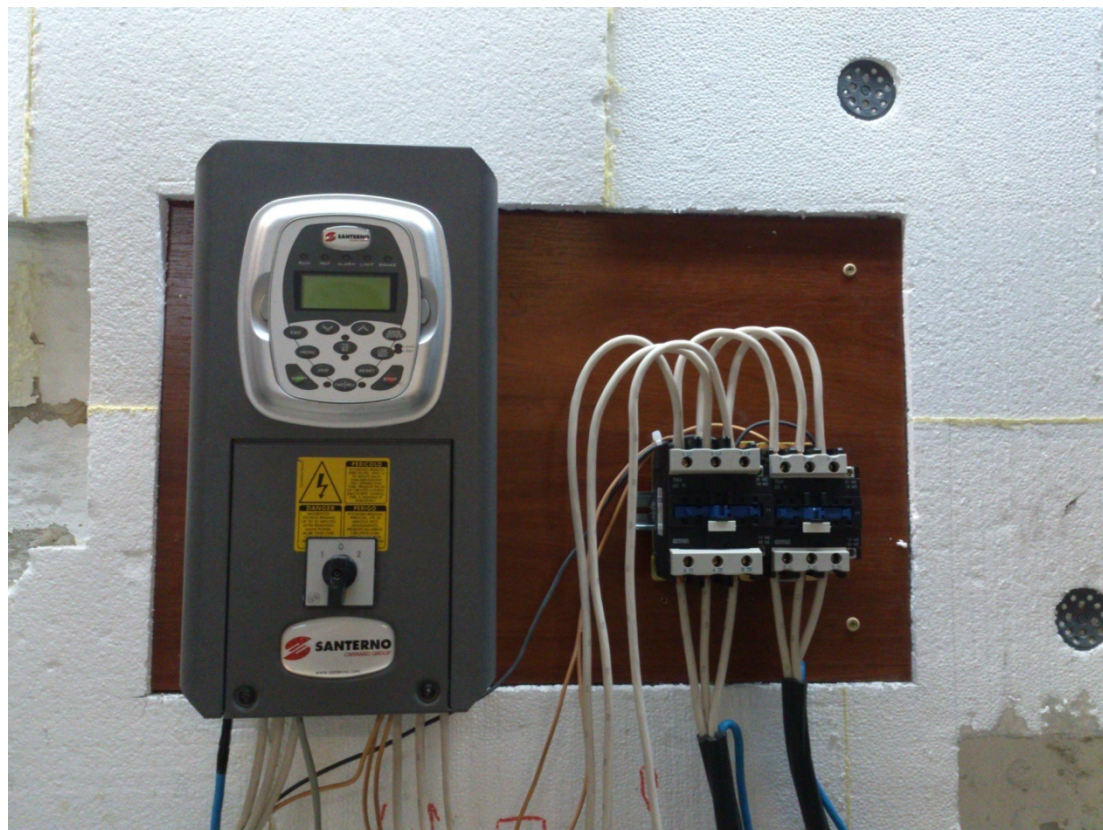




## Mixer for water-based paints- Kyiv reg., Borispol

Products : Sinus Penta 0036 4T BA2 K2 – n.1 pc.

Sinus K 0049 4T BA2 K2 – n.1 pc



# Plastic Industry: Waste Disposal- Kharkov(East)

Year: 2012



Products: Sinus K 0129 4T BA2 K2 – n.1 pc.





# Exhausters : Kharkiv (East)

**Application:** Exhausters

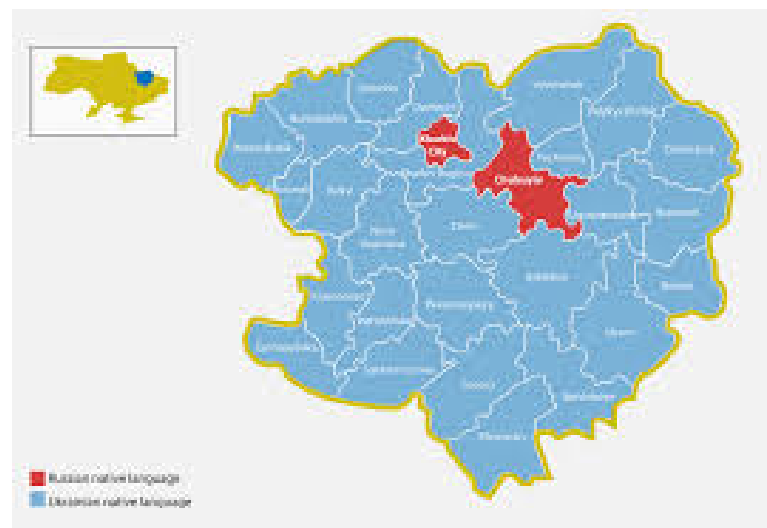
**Product :** Sinus Penta 0034 4T BA2 K2 – n. 10 pcs,  
with Integrated in SCADA system for gas boiler control system

1/2





# Exhausters : Kharkiv (East)



# Fans Test Bench :Kyiv reg. Vishnyovoe

**Products:** Sinus Penta 0005 4T BA2 K2 – n.1

**Year** : 2015

**Client** : “Vents”





# Pumps pressure MUP control- Kyev

**Product :** Sinus M 0003T BA2 K2 – n.1





# Mill. Through panel mounting option- “Dnipropetrovsk”



**Products:** Sinus Penta 0074 4T BA2 K2 – n.2 pcs

**Year** : 2013-2014





# Modernization of metal turning lathe:

## Mariupol- Donetsk reg.

### Products:

DCREG4.250 – n.2 pcs.

DCREG4.410 – n.1 pc.

DCREG4.150 – n.1 pc.

**Years:** 2010-2016



# Water Pumps- Vusokopolie, South-2015

**Application** : Water pumps for water towers by pressure control

**Products** : Sinus Penta 0009 4T BA2 K2 – n.4  
Sinus M 0007 4T BA2 K2 – n.1

**Year** : 2015





# Electromagnet : Mariupol (East)



**Products:** DCREG 4.150 – n.2 pcs,



# Centrifuge for slush water (drill fluid)

Poltava region (East)

Year : July 2016



**Products:** Sinus Penta–  
n.3 pcs,



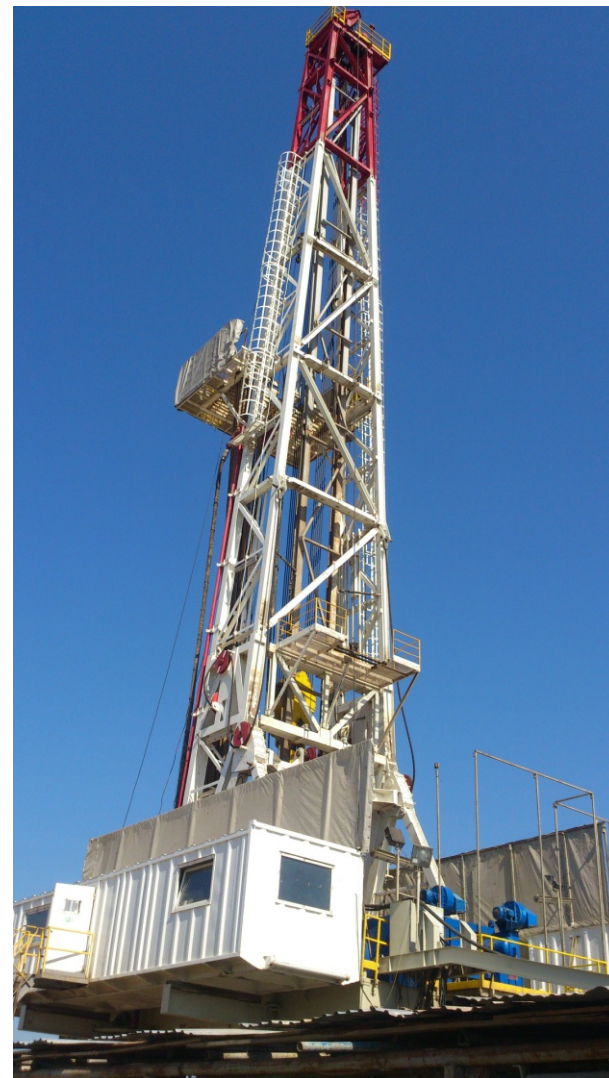


# Centrifuge for slush water (drill fluid)

Poltava region (East)

Year : July 2016

**Products:** Sinus Penta– n.2 pcs,





# Centrifuge for slush water (drill fluid)

Poltava region (East)

Year : July 2016

Products: Sinus Penta– n.2 pcs,





# **SANTERNO: 45 YEARS EXCELLENCE**

## **Your reliable Partner for a Long-term success story**

STRICTLY CONFIDENTIAL

